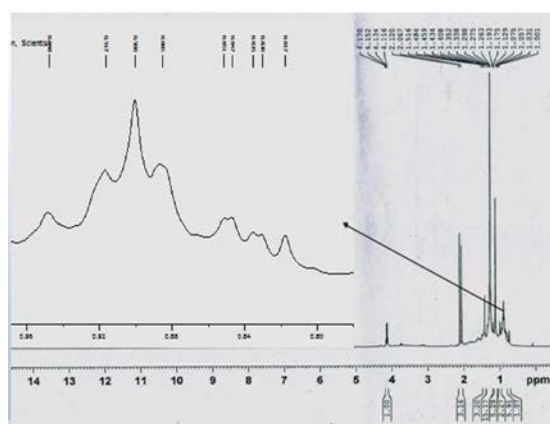
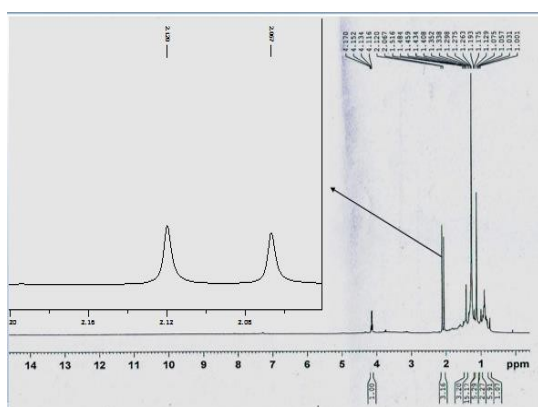


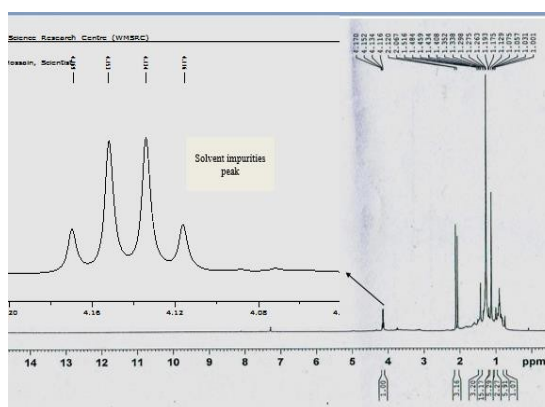
a)



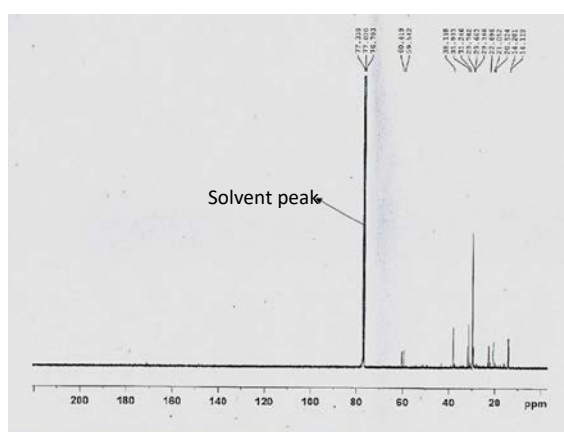
b)



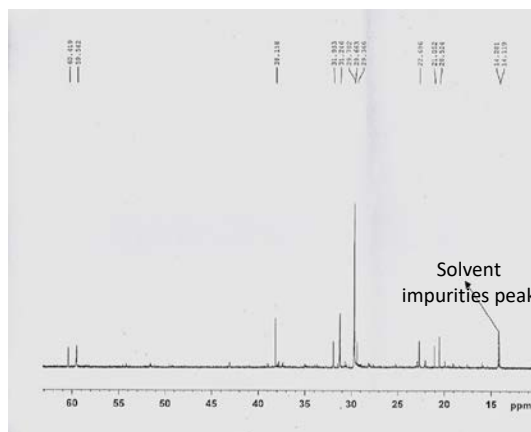
c)



d)



e)



f)

How to cite this article: Sultana S, Hossain ML, Akter S, Sheikh S, Karmakar UK. Phytochemical Analysis and *In-vitro* Bioactivity Study of Methanol Extract of *Byttneria pilosa* (Family: Malvaceae). J Res Pharm. 2023; 27(1): X-XX.

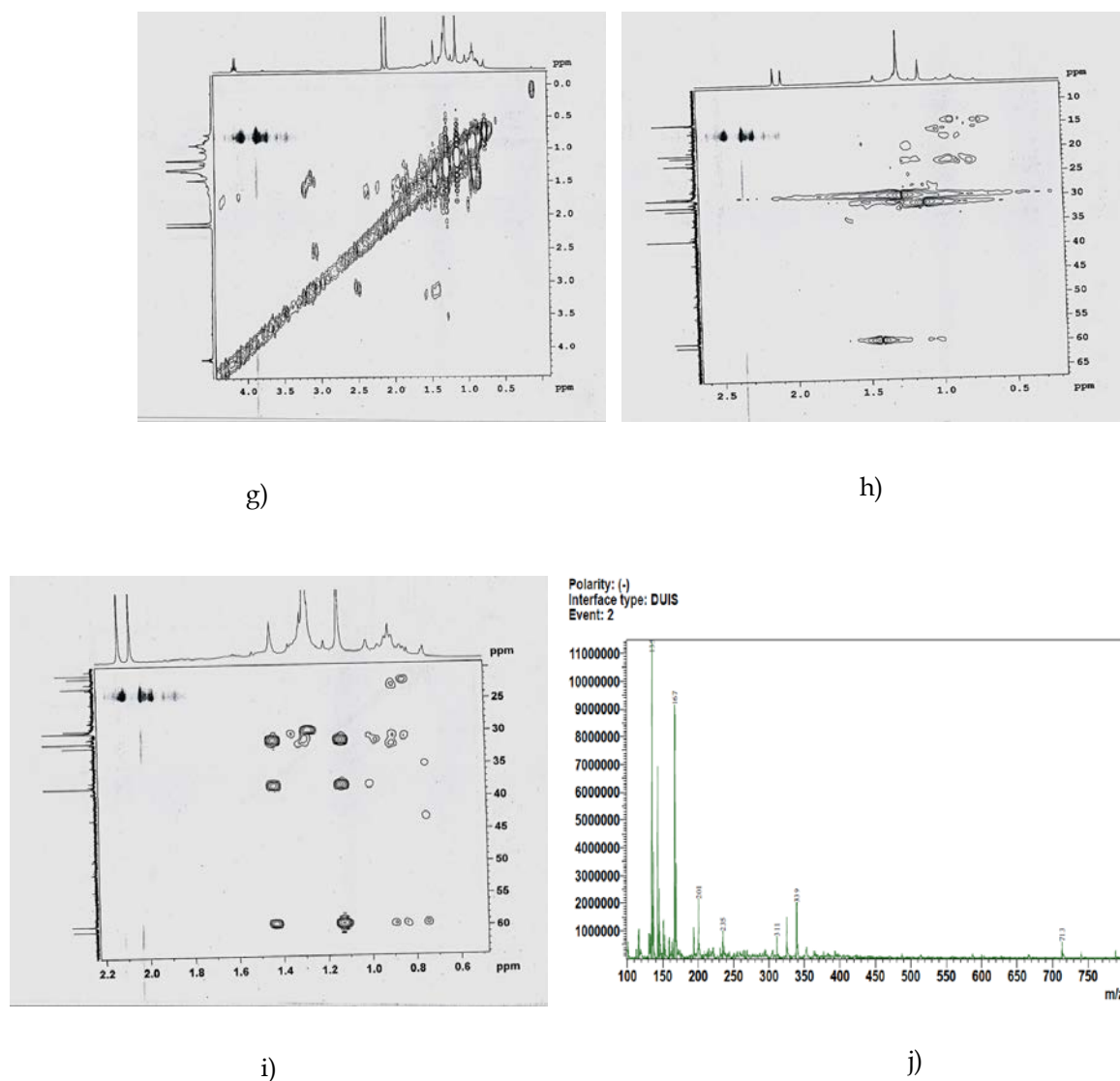


Figure S1. Spectral data: a) ^1H NMR of fraction 1D (CDCl_3 , 400 MHz); b) Expansion of proton NMR of fraction 1D; c) Expansion of proton NMR of fraction 1D; d) Expansion of proton NMR of fraction 1D; e) ^{13}C NMR of fraction 1D f) Expansion of carbon NMR of fraction 1D; g) ^1H - ^1H correlation spectra; h) ^1H - ^{13}C correlation spectra; i) Multiple bond correlation between proton and carbon; j) Mass spectroscopy of 1D fraction in negative scan.