

Supplementary data

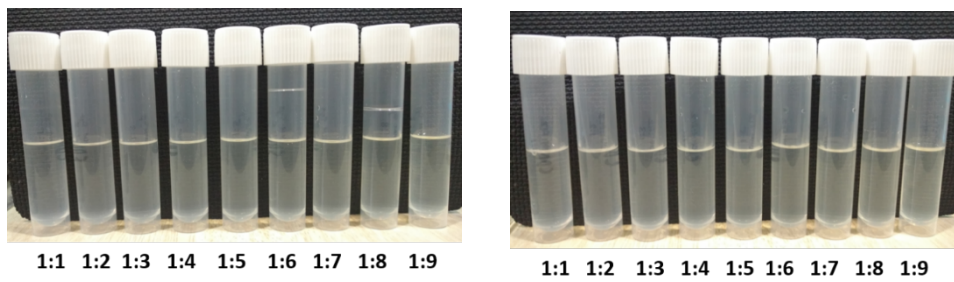


Fig. S1 Optical observation of a) CDMM system 1:1 to 1:9; b) FLZ CDMM ME 1:1 to 1:9

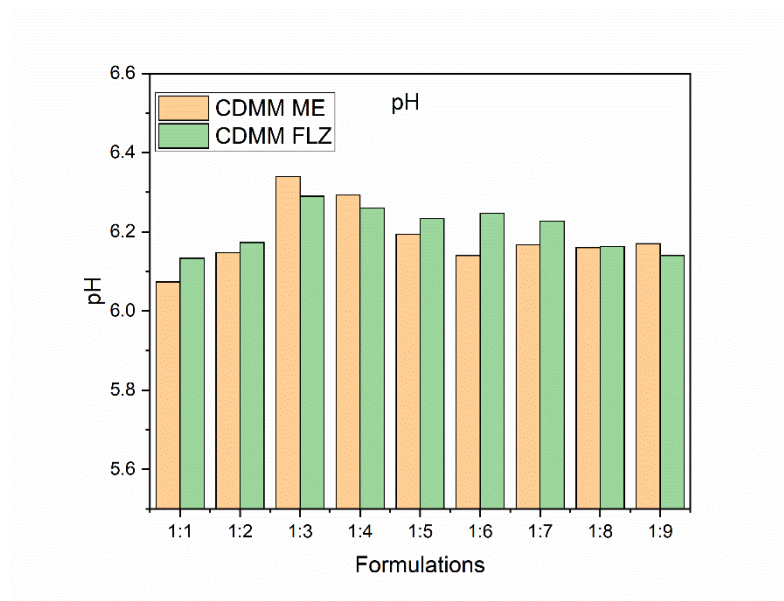


Fig. S2 pH of CDMM ME and CDMM FLZ

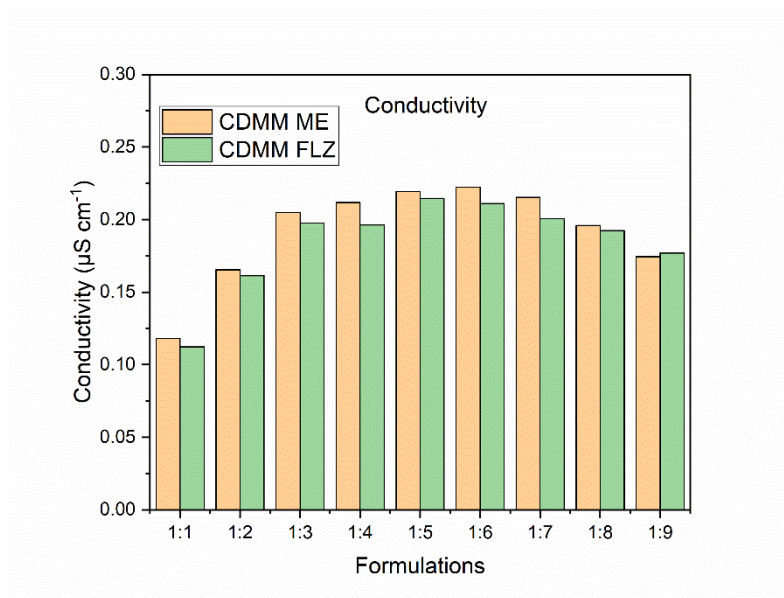


Fig. S3 Conductivity values for CDMM system and CDMM FLZ ME

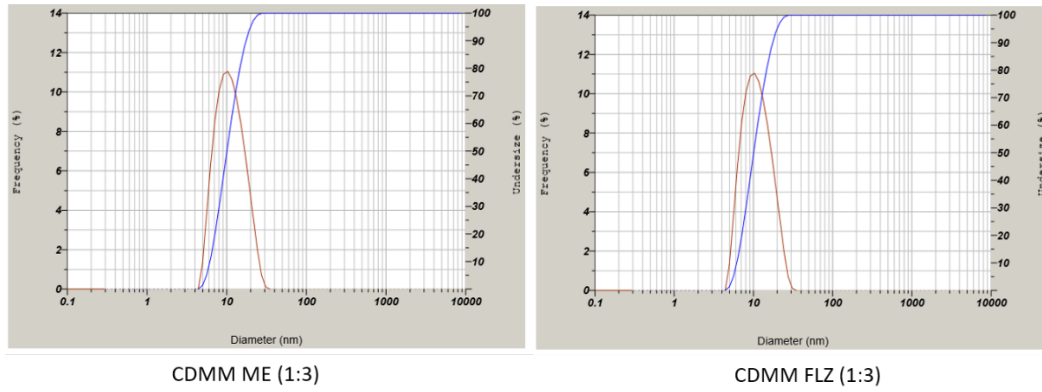


Fig. S4 DLS graph for optimized ME a) CDMM (1:3); b) CDMM FLZ (1:3)

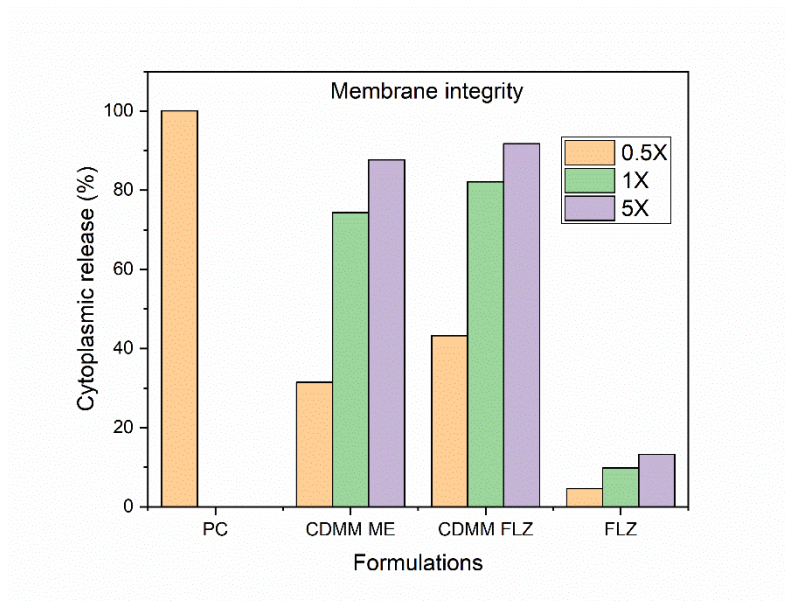


Fig. S5 Membrane integrity assay of CDMM ME, CDMM FLZ, FLZ treated *C. albicans*